

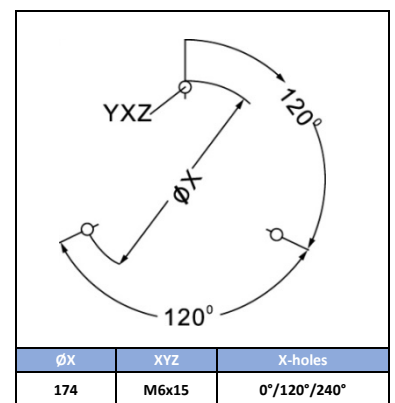
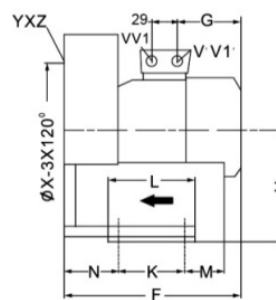
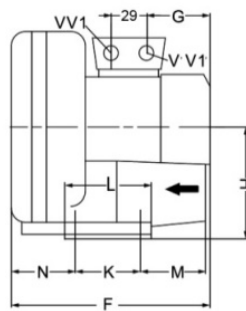
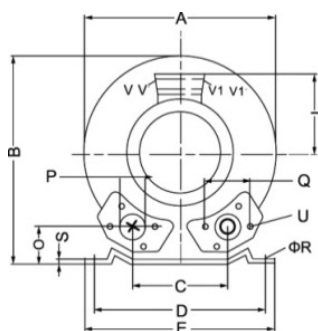
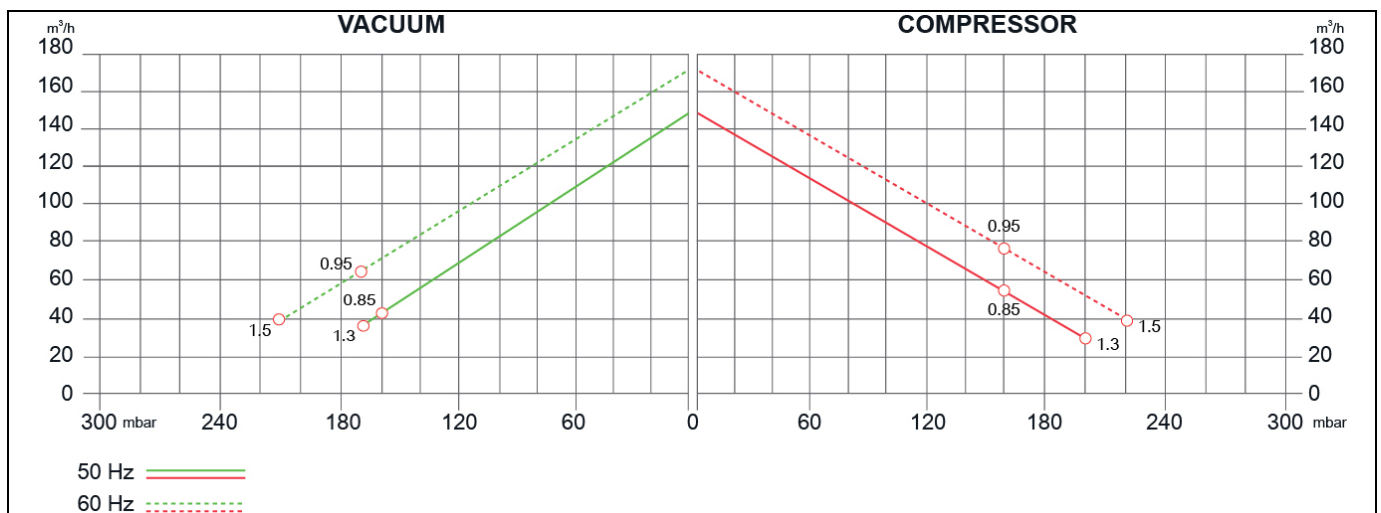
SIDE CHANNEL BLOWERS

BL 040 001 – Single Impeller - Single & Three Phase



Construction of the ring blowers fans is based on the lateral ducts principle. The blowers can operate as either exhaust or compression fans and are designed for continuous service. The device is assembled directly on the motor shaft; all the rotating parts are dynamically balanced to ensure absolute absence of vibration. Full die-cast aluminum construction for maximum sturdiness and ease of handling. The characteristics data given here refer to the handling of gas with inlet temperature of 15°C, normal density of 1,23 kg/m³ and absolute pressure of 1023 mbar. Tolerance of ±10%.

Model	Freq. [Hz]	Power [kW]	Voltage [V]		Rated Current [A]		Max Airflow [m ³ /h]	Rated VACUUM [mbar]	Rated COMPRESSOR [mbar]	Noise [dB A]	Weight [kg]
			△	Y	△	Y					
BL04000100900	50	0.85	200÷240	345÷415	3.85	2.25	145	-160	160	63	17
	60	0.95	220÷275	380÷480	4.0	2.3	175	-160	160	64	
BL04000101300	50	1.3	200÷240	345÷415	5.7	3.3	145	-170	200	63	18
	60	1.5	220÷275	380÷480	6.0	3.5	175	-210	220	64	
BL040001M0900	50	0.85	220÷240		5		145	-160	160	63	16
	60	0.95			5.8		175	-160	160	64	
BL040001M1300	50	1.3			7.3		145	-170	200	63	17
	60	1.5			7.8		175	-210	220	64	



MODEL	A	B	C	D	E	F	G	H	J	K	L	M	N	O	P	Q	ØR	S	U	(1~)		(3~)	
																				V	V'	V1	V1'
BL04000100900	286	302	115	225	255	292	160	154	120	95	130	70	75	46	G1½	72	12	3	M6x19			M25X1.5	M16X1.5
BL04000101300	286	302	115	225	255	292	160	154	120	95	130	70	75	46	G1½	72	12	3	M6x19			M25X1.5	M16X1.5
BL040001M0900	286	302	115	225	255	294	160	154	120	95	130	70	75	46	G1½	72	12	3	M6x19	M16x1.5	M25X1.5		
BL040001M1300	286	302	115	225	255	294	160	154	120	95	130	70	75	46	G1½	72	12	3	M6x19	M16x1.5	M25X1.5		

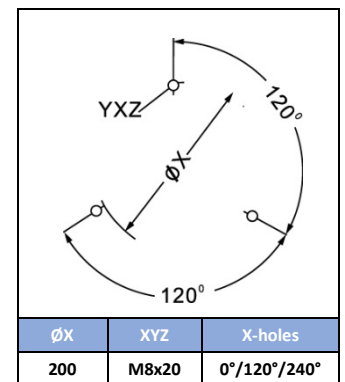
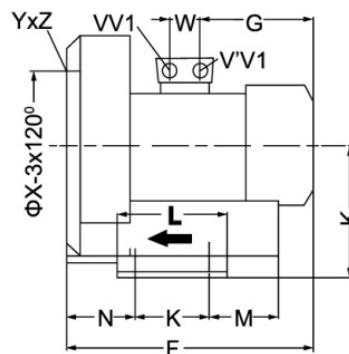
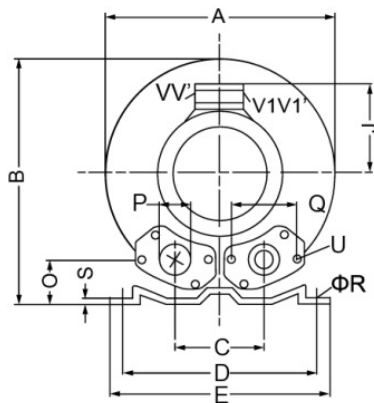
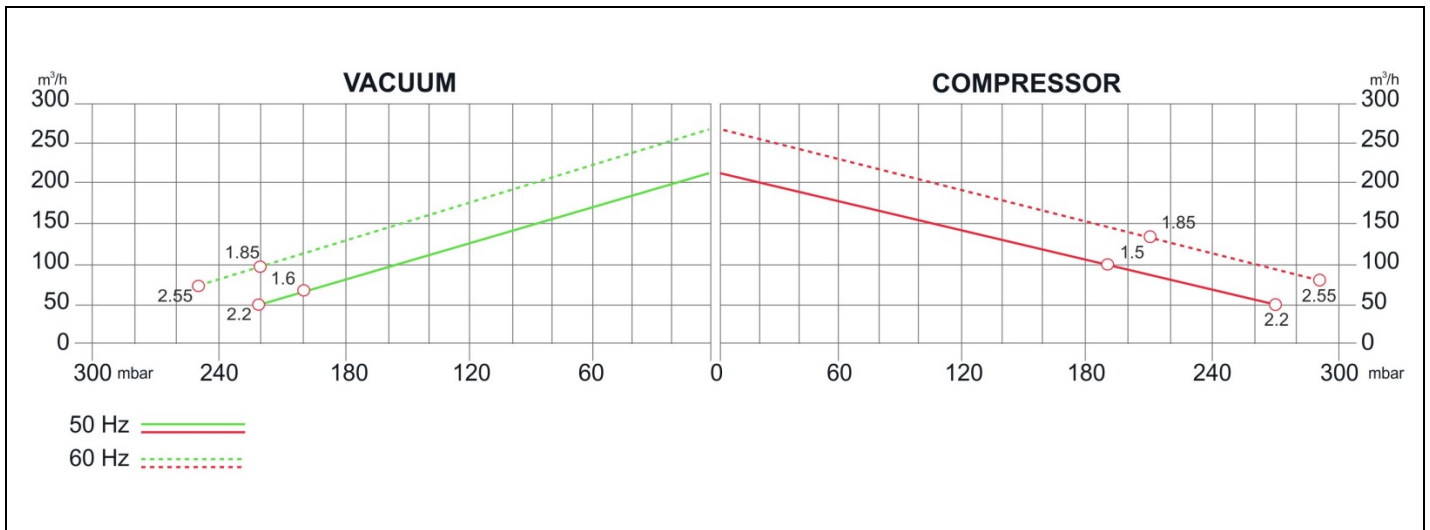
SIDE CHANNEL BLOWERS

BL 050 001 – Single Impeller - Single & Three Phase



Construction of the ring blowers fans is based on the lateral ducts principle. The blowers can operate as either exhaust or compression fans and are designed for continuous service. The device is assembled directly on the motor shaft; all the rotating parts are dynamically balanced to ensure absolute absence of vibration. Full die-cast aluminum construction for maximum sturdiness and ease of handling. The characteristics data given here refer to the handling of gas with inlet temperature of 15°C, normal density of 1,23 kg/m³ and absolute pressure of 1023 mbar. Tolerance of ±10%.

Model	Freq. [Hz]	Power [kW]	Voltage [V]		Rated Current [A]		Max Airflow [m ³ /h]	Rated VACUUM [mbar]	Rated COMPRESSOR [mbar]	Noise [dB A]	Weight [kg]
			△	Y	△	Y					
BL05000101500	50	1.5	200÷240	345÷415	7.5	4.3	210	-200	190	64	23
	60	1.85	220÷275	380÷480	7.6	4.4	255	-220	210	70	
BL05000102200	50	2.2	200÷240	345÷415	9.7	5.6	210	-220	270	64	27
	60	2.55	220÷275	380÷480	10.3	6.0	255	-260	290	70	
BL050001M1500	50	1.5	220÷240		9		210	-200	190	64	24
	60	1.75	220÷240		9.5		255	-220	210	70	



MODEL	A	B	C	D	E	F	G	H	J	K	L	M	N	O	∅P	Q	∅R	S	U	(1~)		(3~)		W
																				V	V'	V	V1'	
BL05000101500	334	337	120	260	295	346	191	175	128	115	155	96	87	48	55	83	14	4	M8x17			M25x1.5	M16x1.5	29
BL05000102200	286	337	120	260	295	346	191	175	128	115	155	96	87	48	55	83	14	4	M8x17			M25x1.5	M16x1.5	29
BL050001M1500	334	337	120	260	295	345	191	175	128	115	155	96	87	48	55	83	14	4	M8x17	M25x1.5	M16x1.5			29

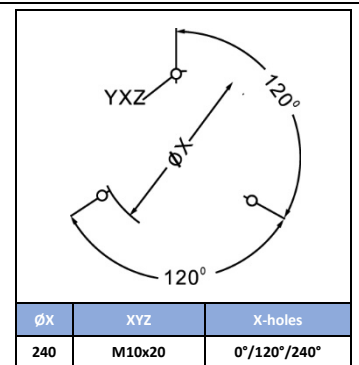
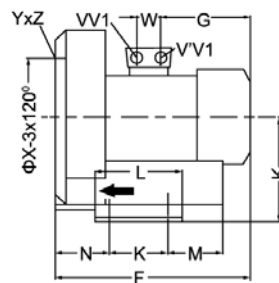
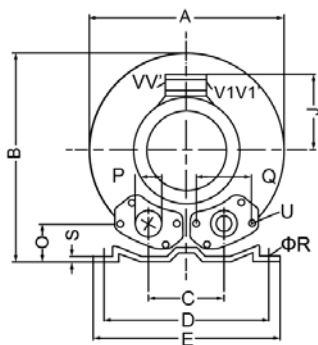
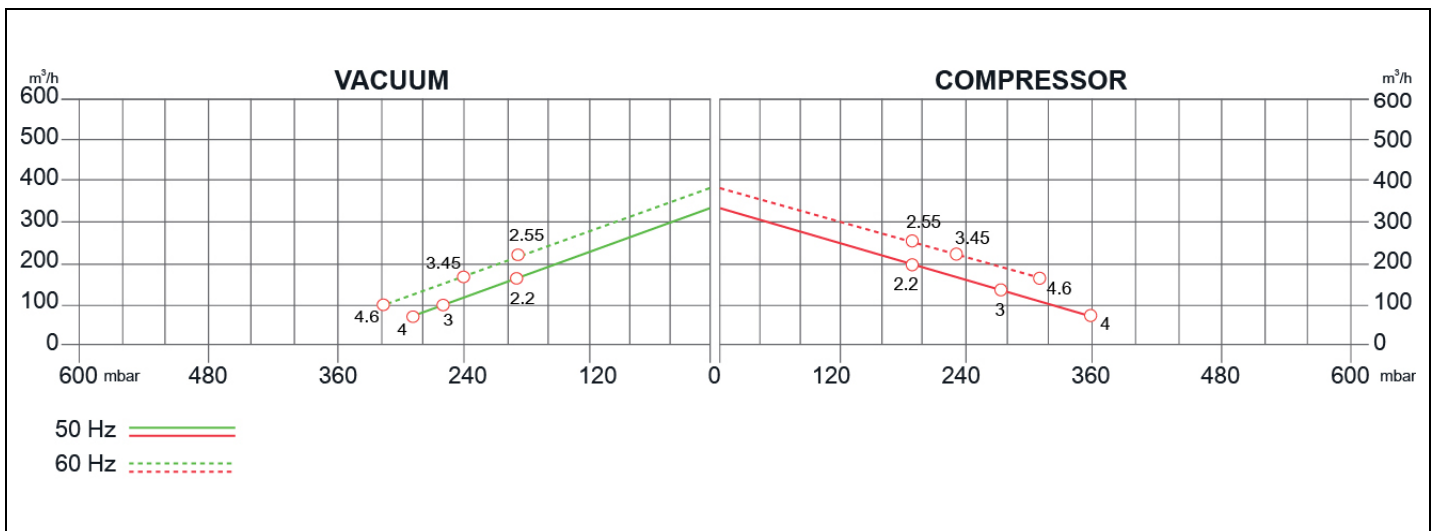
SIDE CHANNEL BLOWERS

BL 060 001 – Single Impeller - Single & Three Phase



Construction of the ring blowers fans is based on the lateral ducts principle. The blowers can operate as either exhaust or compression fans and are designed for continuous service. The device is assembled directly on the motor shaft; all the rotating parts are dynamically balanced to ensure absolute absence of vibration. Full die-cast aluminum construction for maximum sturdiness and ease of handling. The characteristics data given here refer to the handling of gas with inlet temperature of 15°C, normal density of 1,23 kg/m³ and absolute pressure of 1023 mbar. Tolerance of ±10%.

Model	Freq. [Hz]	Power [kW]	Voltage [V]		Rated Current [A]		Max Airflow [m ³ /h]	Rated VACUUM [mbar]	Rated COMPRESSOR [mbar]	Noise [dB A]	Weight [kg]
			Δ	Y	Δ	Y					
BL06000102200	50	2.2	200÷240	345÷415	9.7	5.6	318	-180	190	69	31
	60	2.55	220÷275	380÷480	10.3	6.5	376	-190	190	72	
BL06000103000	50	3	200÷240	345÷415	12.5	7.3	318	-270	270	69	36
	60	3.45	220÷275	380÷480	12.5	7.3	376	-250	230	72	
BL06000104000	50	4	345÷415	600÷720	9.0	5.2	318	-290	360	69	40
	60	4.6	345÷415	660÷720	9.4		376	-320	310	72	
BL060001M2200	50	2.2	220÷240		12.8		318	-190	190	72	30
	60	2.55					376		200	74	



MODEL	A	B	C	D	E	F	G	H	J	K	L	M	N	O	ØP	Q	ØR	S	U	(1~)		(3~)		W
																				V	V'	V	V1'	
BL06000102200	382	384	125	290	325	377	191	197	128	140	180	84	109	54	55	83	15	4.5	M8x17					29
BL06000103000	382	384	125	290	325	409	188	197	135	140	180	84	109	54	55	83	15	4.5	M8x17	M32x1.5	M32x1.5	M32x1.5	M32x1.5	42
BL06000104000	382	384	125	290	325	432	209	197	148	140	180	84	109	54	55	83	15	4.5	M8x17	M32x1.5	M32x1.5	M32x1.5	M32x1.5	42
BL060001M2200	382	384	125	290	325	377	191	197	128	140	180	84	109	54	55	83	15	4.5	M8x17					29

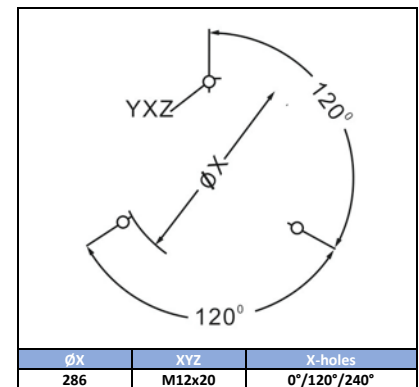
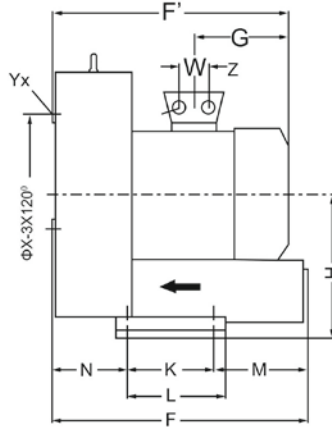
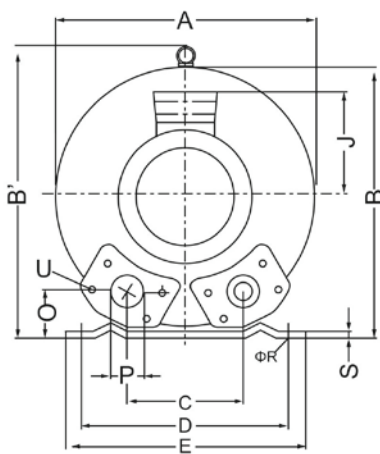
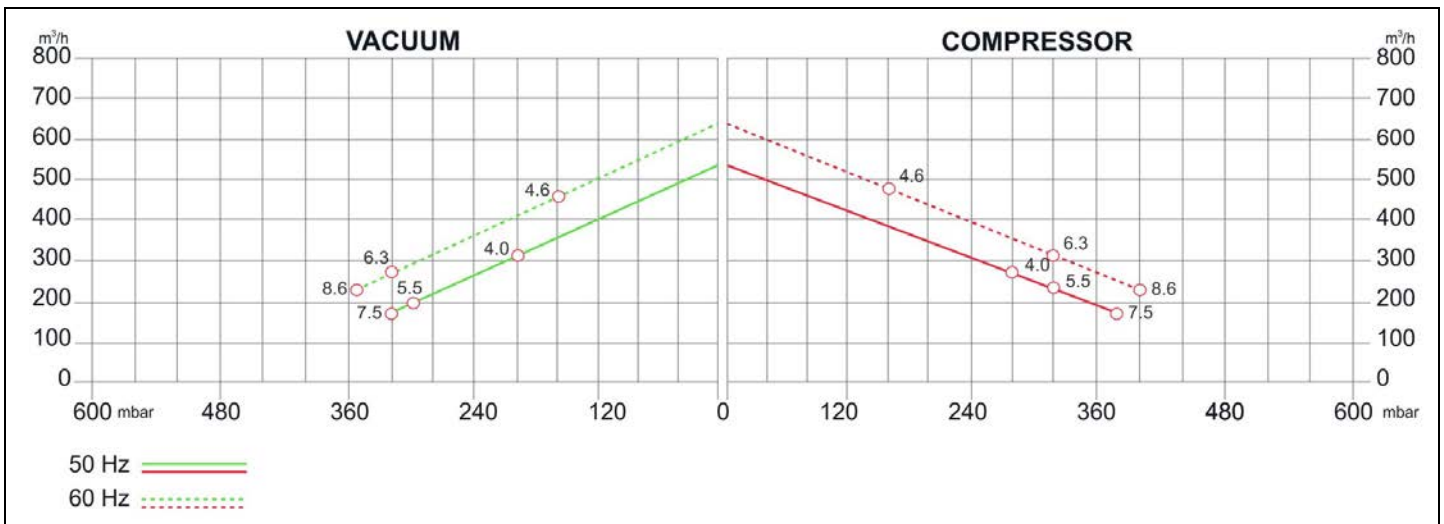
SIDE CHANNEL BLOWERS

BL 070 001 – Single Impeller - Three-phase



Construction of the ring blowers fans is based on the lateral ducts principle. The blowers can operate as either exhaust or compression fans and are designed for continuous service. The device is assembled directly on the motor shaft; all the rotating parts are dynamically balanced to ensure absolute absence of vibration. Full die-cast aluminum construction for maximum sturdiness and ease of handling. The characteristics data given here refer to the handling of gas with inlet temperature of 15°C, normal density of 1,23 kg/m³ and absolute pressure of 1023 mbar. Tolerance of ±10%.

Model	Freq. [Hz]	Power [kW]	Voltage [V]		Rated Current [A]		Max Airflow [m ³ /h]	Rated VACUUM [mbar]	Rated COMPRESSOR [mbar]	Noise [dB A]	Weight [kg]
			Δ	Y	Δ	Y					
BL07000104300	50	4.0	345÷415	600÷720	9.5	5.5	530	-200	200	70	51
	60	4.6	380÷480	660÷720	9.5	5.5	620	-160	160	74	
BL07000105500	50	5.5	345÷415	600÷720	12.9	7.4	530	-300	320	80	62
	60	6.3	380÷480	660÷720	12.9	7.45	620	-320	340	82	
BL07000107500	50	7.5	345÷415	600÷720	16.7	9.6	530	-320	380	80	65
	60	8.6	380÷480	660÷720	17.3	10.0	620	-350	400	82	



MODEL	A	A'	B	B'	C	D	E	F	F'	G	H	H'	J	K	L	M	N	N'	O	φP	φR	S	V	W
BL07000104000	451		461	509	152	356	394	433	450	230	240		148	170	217	140	124		65	2"1/2	15	6	4xM32x1.5	42
BL07000105500	451		461	509	152	356	394	433	477	226	240		148	170	217	140	124		65	2"1/2	15	6	4xM32x1.5	42
BL07000107500	451		461	509	152	356	394	433	477	226	240		148	170	217	140	124		65	2"1/2	15	6	4xM32x1.5	42

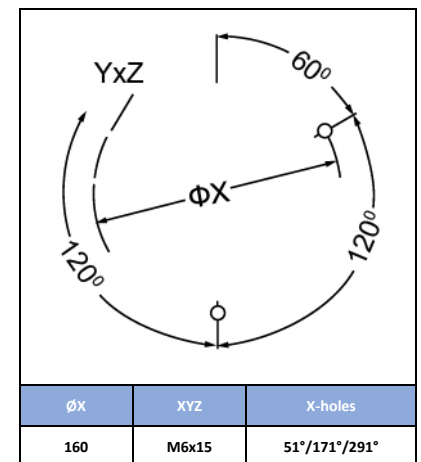
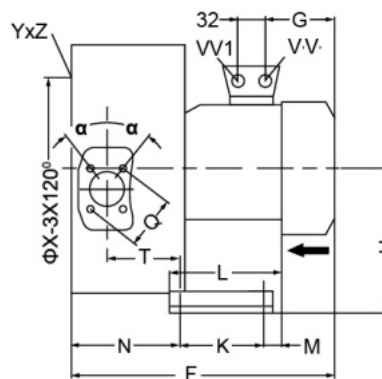
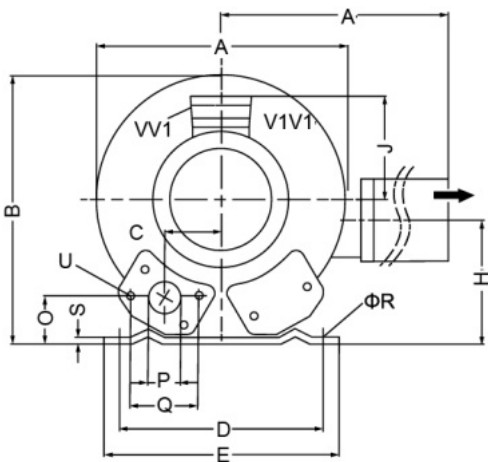
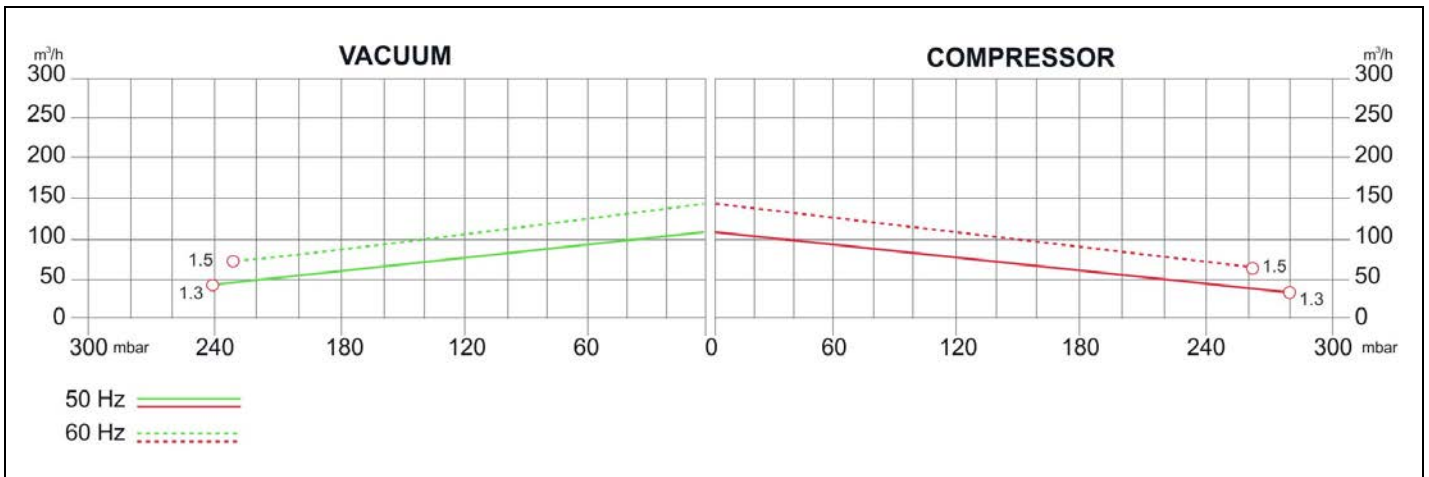
SIDE CHANNEL BLOWERS

BL 352 002 – Double Impeller – Single Phase



Construction of the ring blowers fans is based on the lateral ducts principle. The blowers can operate as either exhaust or compression fans and are designed for continuous service. The device is assembled directly on the motor shaft; all the rotating parts are dynamically balanced to ensure absolute absence of vibration. Full die-cast aluminum construction for maximum sturdiness and ease of handling. The characteristics data given here refer to the handling of gas with inlet temperature of 15°C, normal density of 1,23 kg/m³ and absolute pressure of 1023 mbar. Tolerance of ±10%.

Model	Freq. [Hz]	Power [kW]	Voltage [V]		Rated Current [A]		Max Airflow [m ³ /h]	Rated VACUUM [mbar]	Rated COMPRESSOR [mbar]	Noise [dB A]	Weight [kg]
			△	Y	△	Y					
BL352002M1300	50	1.3	220÷240		7.3		120	-240	280	58	17
	60	1.5									



MODEL	A	A'	B	C	D	E	F	G	H	H'	J	K	L	M	N	O	P	Q	ΦR	S	T	U	(1~)		(3~)		α		
																							V	V'	V	V1'			
BL352002M1300	293	324	286	47	205	230	354	160	141	114	120	83	108	82	138	41	G1/4"	64	10	2.5	92	M6x17	M16X1.5	M25X1.5					27

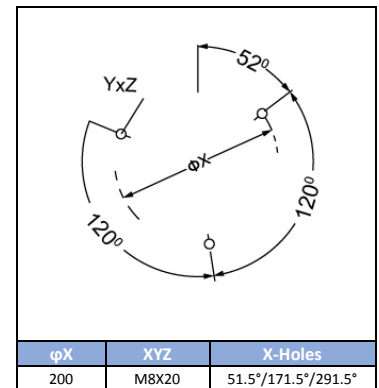
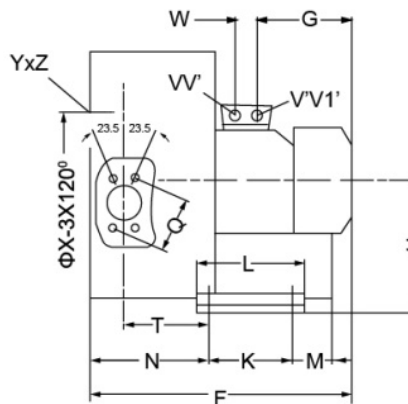
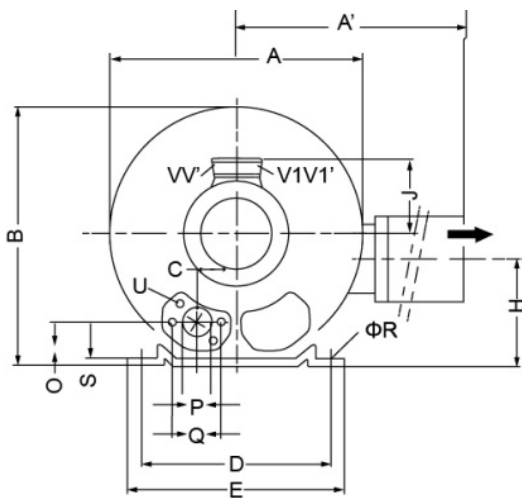
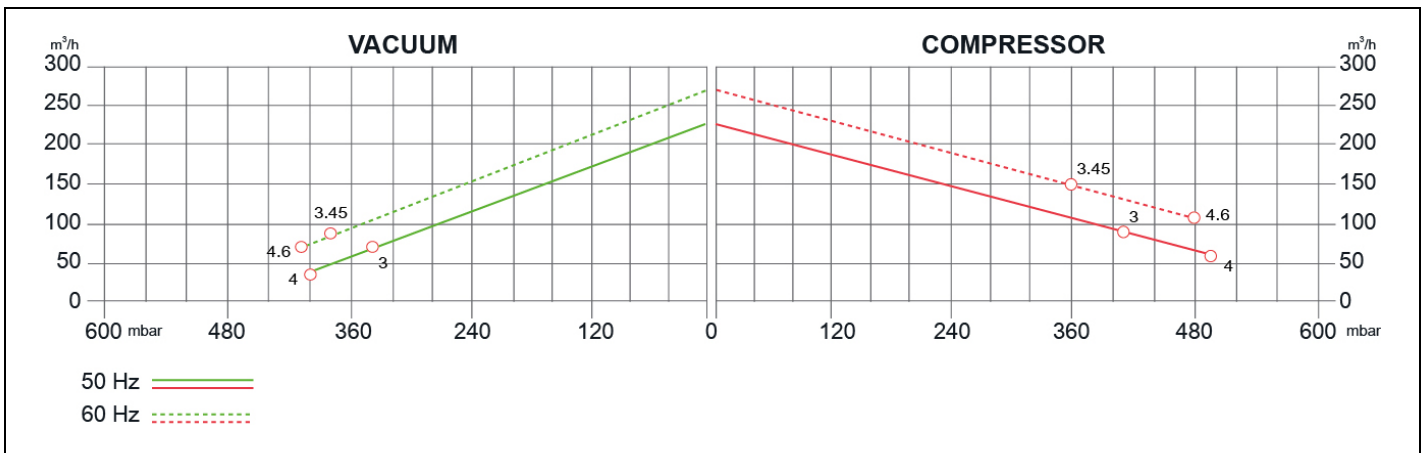
SIDE CHANNEL BLOWERS

BL 520 002 – Double Impeller – Three Phase



Construction of the ring blowers fans is based on the lateral ducts principle. The blowers can operate as either exhaust or compression fans and are designed for continuous service. The device is assembled directly on the motor shaft; all the rotating parts are dynamically balanced to ensure absolute absence of vibration. Full die-cast aluminum construction for maximum sturdiness and ease of handling. The characteristics data given here refer to the handling of gas with inlet temperature of 15°C, normal density of 1,23 kg/m³ and absolute pressure of 1023 mbar. Tolerance of ±10%.

Model	Freq. [Hz]	Power [kW]	Voltage [V]		Rated Current [A]		Max Airflow [m ³ /h]	Rated VACUUM [mbar]	Rated COMPRESSOR [mbar]	Noise [dB A]	Weight [kg]
			△	Y	△	Y					
BL52000203000	50	3.00	200÷240	345÷415	12.5	7.2	230	-340	410	72	39
	60	3.45	220÷275	380÷480	12.6	7.3	275	-380	360	74	
BL52000204000	50	4.00	345÷415	600÷720	10	5.8	230	-390	490	72	44
	60	4.60	380÷480	660÷720	9.9	5.71	275	-410	480	74	



MODEL	A	A'	B	C	D	E	F	G	H	H'	J	K	L	M	N	O	φP	Q	φR	S	T	U	V	V'	V1	V1'	W	
BL52000203000	372	411	371	60	260	295	465	190	175	144	135	115	155	98	171	48	55	83	14	4	116	M8X17	M32x1.5	M32x1.5	M32x1.5	M32x1.5	M32x1.5	42°
BL52000204000	372	411	371	60	260	295	499	224	175	144	135	115	155	98	171	48	55	83	14	4	116	M8X17	M32x1.5	M32x1.5	M32x1.5	M32x1.5	M32x1.5	42°

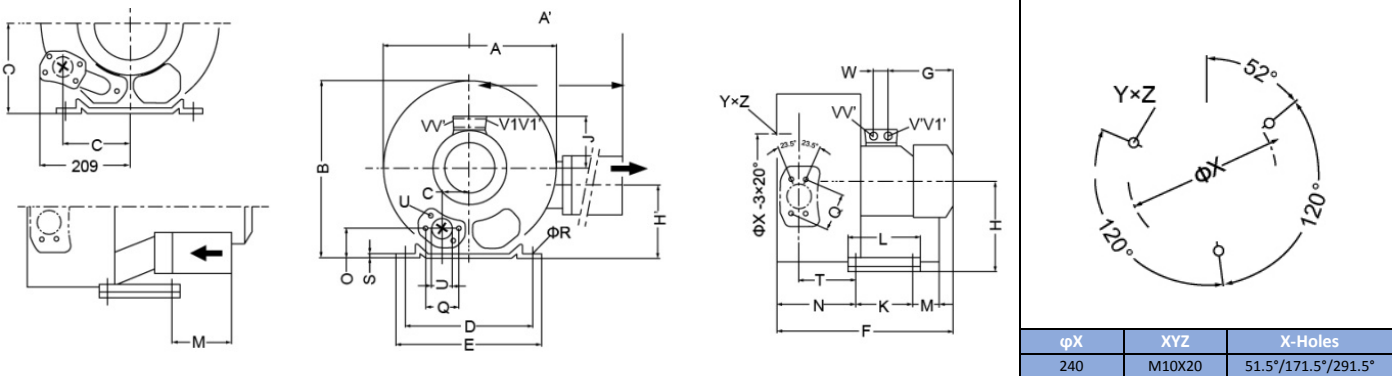
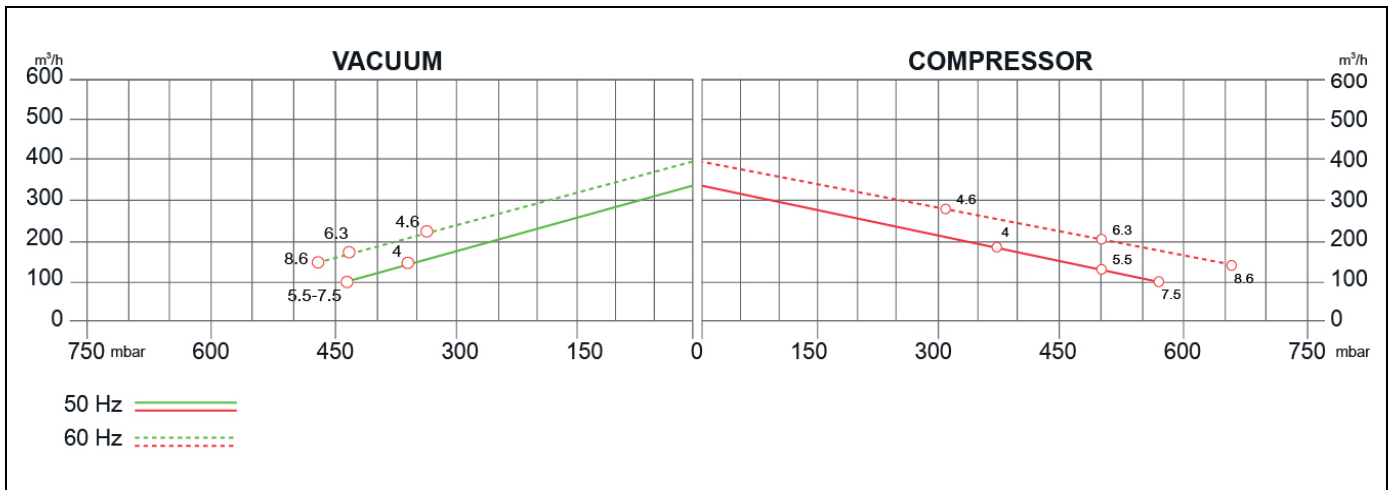
SIDE CHANNEL BLOWERS

BL 620 002 – Double Impeller – Three Phase



Construction of the ring blowers fans is based on the lateral ducts principle. The blowers can operate as either exhaust or compression fans and are designed for continuous service. The device is assembled directly on the motor shaft; all the rotating parts are dynamically balanced to ensure absolute absence of vibration. Full die-cast aluminum construction for maximum sturdiness and ease of handling. The characteristics data given here refer to the handling of gas with inlet temperature of 15°C, normal density of 1,23 kg/m³ and absolute pressure of 1023 mbar. Tolerance of ±10%.

Model	Freq. [Hz]	Power [kW]	Voltage [V]		Rated Current [A]		Max Airflow [m ³ /h]	Rated VACUUM [mbar]	Rated COMPRESSO R [mbar]	Noise [dB A]	Weight [kg]
			△	Y	△	Y					
BL62000204000	50	4	345÷415	600÷720	9.0	5.2	320	-355	375	73	53
	60	4.6	380÷480	660÷720	9.4		385	-345	315	76	
BL62000205500	50	5.5	345÷415	600÷720	13.3	7.7	320	-440	500	73	70
	60	6.3	380÷480	660÷720			380			76	
BL62000207500	50	7.5	345÷415	600÷720	16.7	9.6	320	440	570	73	74
	60	8.6	380÷480	660÷720	17.3		10.0	380	460	660	



MODEL	A	A'	Bvv	C	D	E	F	G	H	H'	J	K	L	M	N	O	ØP	Q	ØR	S	T	U	V	V'	V1	V1'	W
BL62000204000	426	426	410	154	290	325			197	162		140	180		205	53	55	83	15	4.5	130	M8X17	M32X1.5	M32X1.5	M32X1.5	M32X1.5	42
BL62000205500	426	426	410	154	290	325	571	226	197	162	167	140	180	200	205	53	55	83	15	4.5	130	M8X17	M32X1.5	M32X1.5	M32X1.5	M32X1.5	42
BL62000207500	426	426	410	154	290	325	571	226	197	162	167	140	180	200	205	53	55	83	15	4.5	130	M8X17	M32X1.5	M32X1.5	M32X1.5	M32X1.5	42

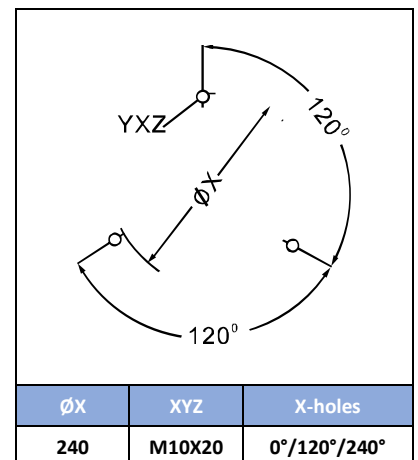
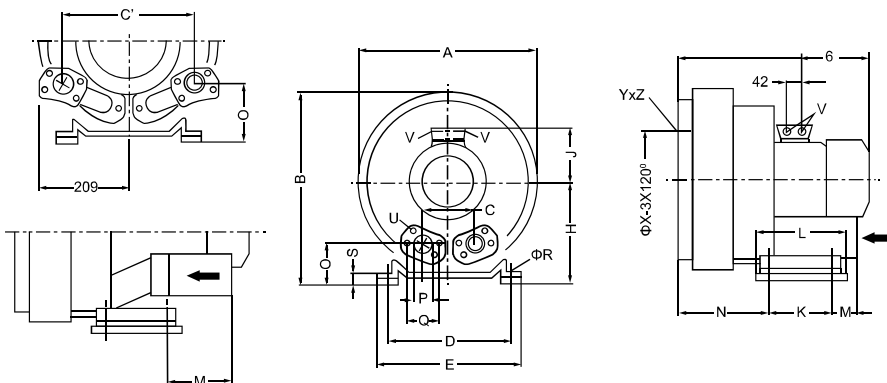
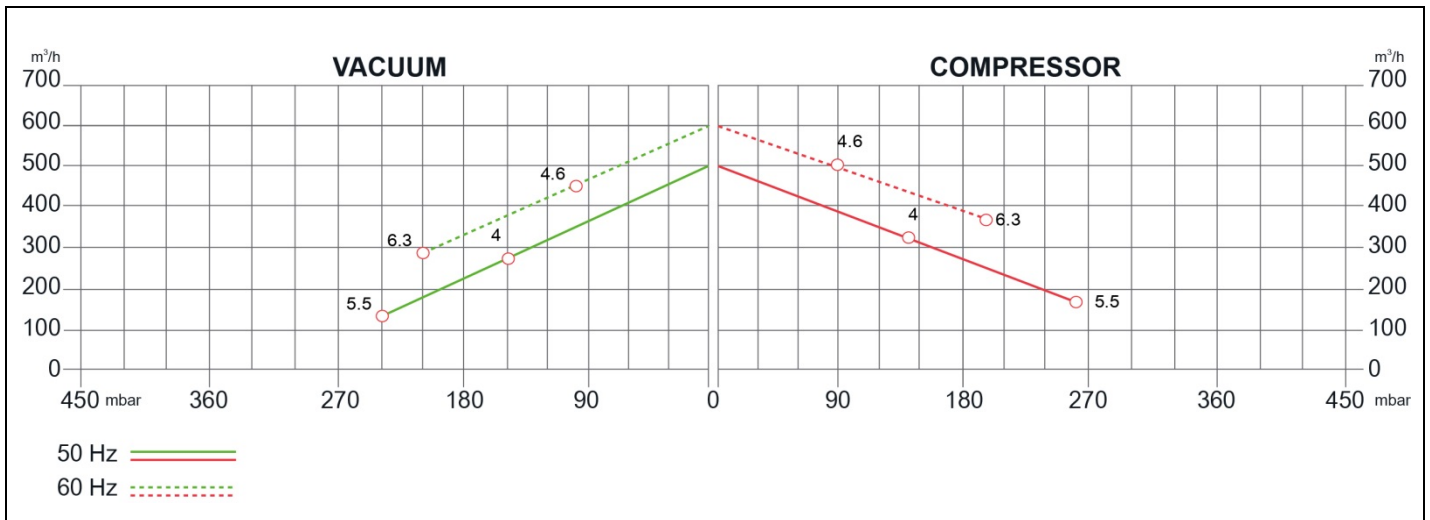
SIDE CHANNEL BLOWERS

BL 620 020 – Double Impeller - Three Phase



Construction of the ring blowers fans is based on the lateral ducts principle. The blowers can operate as either exhaust or compression fans and are designed for continuous service. The device is assembled directly on the motor shaft; all the rotating parts are dynamically balanced to ensure absolute absence of vibration. Full die-cast aluminum construction for maximum sturdiness and ease of handling. The characteristics data given here refer to the handling of gas with inlet temperature of 15°C, normal density of 1,23 kg/m³ and absolute pressure of 1023 mbar. Tolerance of ±10%.

Model	Freq. [Hz]	Power [kW]	Voltage [V]		Rated Current [A]		Max Airflow [m ³ /h]	Rated VACUUM [mbar]	Rated COMPRESSOR [mbar]	Noise [dB A]	Weight [kg]
			△	Y	△	Y					
BL62002004000	50	4	345÷415	600÷720	9.0	5.2	500	-150	140	74	54
	60	4.6	380÷480	660÷720			600	-100	90	78	
BL62002005500	50	5.5	345÷415	600÷720	13.3	7.7	500	-240	260	74	69
	60	6.3	380÷480	660÷720			600	-210	200	78	



MODEL	A	B	C	C'	D	E	F	G	H	J	K	L	M	N	O	P	Q	φR	S	U	V	φx	XYZ	X-HOLES
BL62002004000	420	410	125		290	325	526	209	197	148	140	180	84	205	153	G2	83	15	64.5	M8X17	2XM25X1.5	240	M10X20	0°/120°/240°
BL62002005500	420	410		308	290	325	571	226	257	167	140	180	200	205	153	G2	83	15	64.5	M8X17	2XM25X1.5	240	M10X20	0°/120°/240°

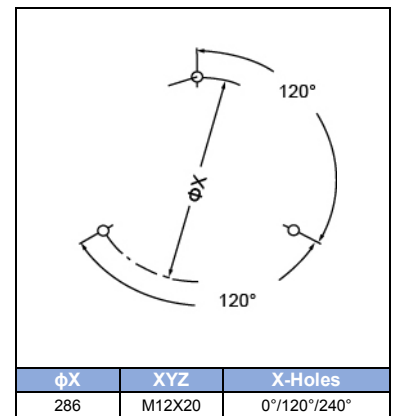
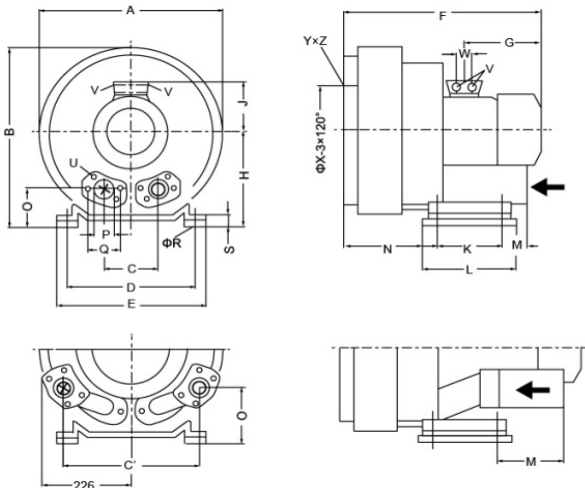
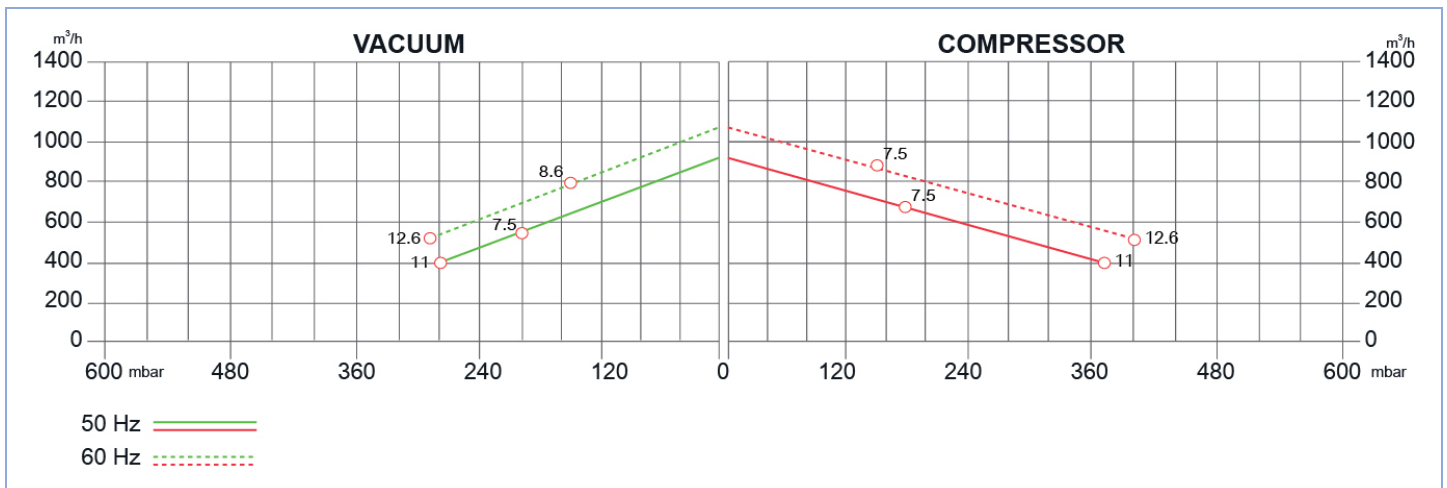
SIDE CHANNEL BLOWERS

BL 820 020 – Double Impeller



Construction of the ring blowers fans is based on the lateral ducts principle. The blowers can operate as either exhaust or compression fans and are designed for continuous service. The device is assembled directly on the motor shaft; all the rotating parts are dynamically balanced to ensure absolute absence of vibration. Full die-cast aluminum construction for maximum sturdiness and ease of handling. The characteristics data given here refer to the handling of gas with inlet temperature of 15°C, normal density of 1,23 kg/m³ and absolute pressure of 1023 mbar. Tolerance of ±10%.

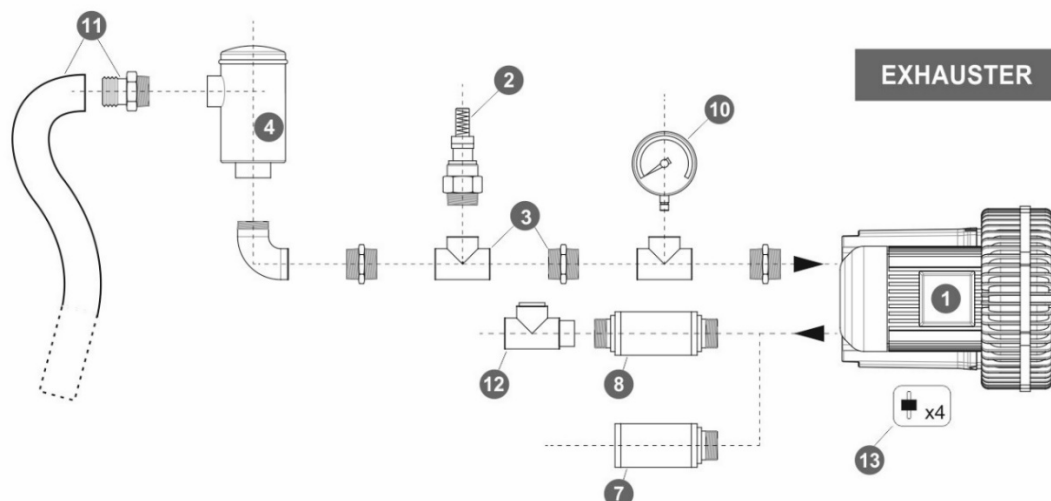
Model	Freq. [Hz]	Power [kW]	Voltage [V]		Rated Current [A]		Max Airflow [m ³ /h]	Rated VACUUM [mbar]	Rated COMPRESS OR [mbar]	Noise [dB A]	Weight [kg]
			△	Y	△	Y					
BL82000207500	50	7.5	345÷415	600÷720	16.7	9.6	900	-200	180	74	91
	60	8.6	380÷480	660÷720	17.3	10.0	1050	-150	120	78	
BL82002011000	50	11	345÷415	600÷720	28.0	16.2	900	-280	370	74	110
	60	12.6	380÷480	660÷720	29.0	16.7	1050	-310	350	78	



MODEL	A	B	C	C'	D	E	F	G	H	J	K	L	M	N	O	P	Ø R	S	V	W
BL82000207500	500	550	152	-	356	394	589	247	300	167	170	217	-	236	125	G 2½	15	66	4XM32X1.5	42
BL82002011000			-	336			694	318					312	212	165					

SIDE CHANNEL BLOWERS

BL 820 020 – Double Impeller



Ref. #	Description	Code
1	Side Channel Blower Double Impeller / Single Stage – 2”½ connection	BL 820 020__
2	Safety Valve	BLSV050AL03 BLSV050AL36
3	Installation kit safety valve	-
4	In-Line filter	Paper Polyester Stainless Steel 30 µ Stainless Steel 60 µ
5	Cartridge filter	BLCF065PA007
6	Filter kit	Nipple Socket
7	Final Silencer	BLFS065ZP - BLFS065ZPR
8	In-Line silencer	BLIS065
9	Indoor filter	BLIF065ZP100
10	Gauge	Pressure Vacuum
11	Sleeve + Hose clip kit	BLSH065
12	Check valve	BLCV032AL
13	Anti-vibration pins	BLAV12

